

# DUBLIN - MAYNOOTH

SITE-  
SPECIFIC  
GUIDE:  
SUMMER



ACADEMIC  
STUDIES  
ABROAD

# Table of Contents

---

<b>01</b>	Pre-Departure.....	Page 3
<b>02</b>	Arrival.....	Page 8
<b>03</b>	Academics.....	Page 9
<b>04</b>	Everyday Life.....	Page 13
<b>05</b>	Staying In Touch.....	Page 18
<b>06</b>	Helpful Info.....	Page 18

# Pre-Departure

Please see our Pre-Departure Guide for All Programs for additional important pre-departure information!

Please add the important numbers to your phone

<p><b>ASA Office in Boston, MA</b> <b>Academic Studies Abroad</b> 72 River Park Street, Suite 104 Needham, MA 02494 Tel: 617-327-9388 24-hour Emergency Cell: 857-366-6821 Email: hello@academicstudies.com Web: <a href="http://www.academicstudies.com">www.academicstudies.com</a></p> <p><b>Emergency</b> <b>Local in Ireland:</b> 112</p>	<p><b>Maynooth University:</b> TEL: +353 1 708 6000 International Office Contact: Jodi Killackey Email: Jodi.killackey@mu.ie</p> <p><b>ASA Site Director in Dublin:</b> Olwyn Mannix TEL: 011 353 83 834 7279 (from the U.S.) 0 83 834 7279 (in Ireland)</p> <p><b>* See international dialing instructions below.</b></p>
<p><b>U.S. Embassy in Dublin</b> 42 Elgin Road Ballsbridge Dublin 4 <a href="https://ie.usembassy.gov/">https://ie.usembassy.gov/</a> For emergencies involving American citizens, call: 01 668 8777 (in Ireland) / 011 353 1 668 8777 (from the U.S.)</p>	<p><b>Police/Fire/Ambulance</b> (Local numbers, as dialed in Ireland)</p> <p>Dial 999 or 112 (dial 112 from a cell phone)</p>

In an emergency, please contact your ASA Site Director immediately.  
It is of utmost importance that you notify your Site Director of any problems, issues,  
or concerns that you encounter while you're abroad.

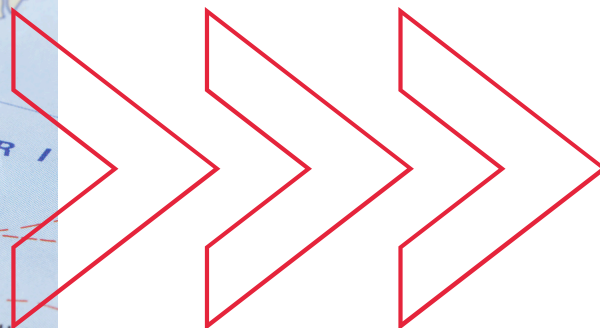
011 = International Dialing Code

353= Ireland Country Code

# International Dialing Instructions



- To call Ireland from the U.S., dial 011 353 and the local number, omitting the first zero of the local number. For example, to call (+353)(0)1 415 0420 from the U.S. you would dial 011 353 1 415 0420.
- Within Ireland, the number (+353)(0)1 415 0420 would be dialed as 01 415 0420
- How to Call the U.S. from Ireland: 011 + area code and number



# Passport & Visa

All students must have a passport that is valid for at least 6 months beyond the day you plan to return to the U.S.

**IF YOU DON'T HAVE A U.S. PASSPORT, PLEASE NOTIFY ASA IMMEDIATELY!**

Non-U.S. citizens may have a different visa process than described below, that requires steps to be taken in the U.S. or your home country before you arrive in Ireland.

What should I do if I lose my passport?

Contact the local police, the U.S. Embassy, and your Site Director immediately. Having a photocopy of your passport on hand will make it MUCH easier to have it replaced.

## Obtaining Your Student Visa

In order to study in Ireland for a summer program, you must present the following documents when you pass through Immigration upon your first entry into Ireland. You will be given a 90-day stamp in your passport. You must have your passport stamped upon first entry into Ireland. This will document your entry into the country; failing to get your passport stamped could cause problems with your visa. Pack these documents in your carry-on.

1. Valid U.S. passport that does not expire for at least 6 months after your proposed return date from Ireland. Check your passport's expiration date!
2. Invitation to Register from Maynooth University. ASA will email and/or mail this to you shortly before departure.
3. Evidence of Finances: 2 bank statements from an account IN YOUR NAME showing that you have enough money to live on while you're in Ireland – minimum of €2000 (in both bank statements) for a semester program or €500 for a summer program. You cannot use your parents' bank statement for this. Please check the current Euro to US Dollar exchange rate prior to your departure at: [www.xe.com](http://www.xe.com) to ensure you have the correct amount of funds in your account.
4. Proof of your ASA medical insurance coverage in the form of your insurance card from CISI (emailed to you prior to departure).
5. Your round trip plane ticket. You will not be allowed to enter Ireland on a one- way ticket.

# STEP & ETA

## STEP: Safe Traveler Enrollment Program

STEP registration is MANDATORY to complete before departure. This free service, offered by the US Department of State, enables the DOS to quickly contact US citizens abroad during emergencies, such as natural disaster, civil unrest, or a family emergency. By registering, you also get real time updates about safety, security, health, and weather in country. Click this link to complete your STEP registration before departure: <https://mytravel.state.gov/s/step>

**MANDATORY:**

**IF A US CITIZEN, YOU  
MUST ENROLL IN STEP**

## ETA: For visiting & transiting through England, Scotland, Wales & Northern Ireland

### WHO:

For United States (US) passport holders, the ETA is required for anyone traveling through the UK for study, visit, or transit through (layover), via any method of transportation (e.g. plane, train, boat). If you are traveling on a non-US passport, first check to see if you can apply for an ETA [here](#). If your country is not yet approved for the ETA, notify your ASA Program Manager immediately (617-327-9388) for next steps.

### WHAT:

The Electronic Travel Authorization (ETA) is a permission to travel for those who do not currently need to obtain a visa or do not have a United Kingdom (England, Scotland, Wales, and Northern Ireland) immigration status. **The ETA is valid for two (2) years from date of issue, or until passport expires, whichever is sooner.** It is valid for multiple journeys and must be valid for the entirety of your stay. It cannot be extended.

The ETA is digitally linked to your passport. There is no physical component. While you are not required to show a paper copy, we highly recommend saving a screenshot and/or printing your ETA approval email and adding it to your acceptance documents for your records. You are required to send a copy of your ETA approval email to your ASA Program Manager. To see how to apply, read on.

### HOW:

Students apply for the ETA electronically via the [UK ETA app](#).

Application Steps:

1. Watch the short "Getting Started: Applying for the UK ETA" video.
2. Gather information for the ETA application (contact information, physical valid U.S. passport in hand, recent photo or headshot, method of payment). Your flight itinerary is not required to apply.
3. Follow the instructions on the app or the UK GOV website. We recommend applying and getting approval at least 1 week prior to arrival in the UK.
4. Once received, **SAVE** your UK ETA approval email as a pdf or jpeg. Be sure that it is legible and email a copy to your ASA Program Manager. This is a critical step, as we must ensure you are complying with immigration requirements.

# Budgeting for Study Abroad

The EURO (€) became the official currency of the Republic of Ireland in 1999. (Northern Ireland, part of the UK, still uses the Pound Sterling £.) Bills come in denominations of €5, €10, €20, €50, €100, €200, and €500. Coins come in denominations of €2, €1, 50 cents, 20 cents, 10 cents, 5 cents, and 1 cent.

Exchange rates fluctuate, so check <http://www.xe.com/ucc/convert.cgi> for today's exchange rate.

## How much money should I bring?

US\$200 per week of your stay

*Please note that these are general guidelines based on what past students have reported spending. Some students spend less and others more. The above figures do not allow for traveling every weekend, eating out a lot, or shopping every day. Included in this amount is local transportation, spending money, personal expenses, daily lunch and 1 dinner per week, meals on excursions, grocery shopping, some laundry, etc.*

## What expenses should I budget for?

Please note: Housing, medical insurance, and all other ASA services are not included during the break between semesters or terms. \* = Accounted for in weekly money recommendation above.

1. **Books and materials for your classes** Budget US\$150. Some professors may require students to have additional reading materials/supplies for class. It is best to wait until you arrive to get any books for your semester.
2. **Local Transportation\*** Budget US\$150-200 for summer. Local transportation includes getting around town during your free time, getting to and from where your group is meeting to depart for an excursion and getting home after an excursion. This will include paying for bus and taxi fares.
3. **Cell phone** Budget US\$100 for summer
4. **Spending money / Personal expenses\*** Entertainment, shopping, souvenirs, dining out, haircuts, toothpaste, etc.
5. **Meals on excursions\***
6. **Transportation back to the airport at the end of the program** Budget US\$40
7. **Have at least \$1,000 in savings for emergencies**

# Arrival

What should I do when I get off the plane at Dublin airport?

## 01 Passport Control/Immigration

After you de-plane, you will go through Passport Control (also called Immigration) where you will present your passport and visa documents. (See "Passport and Visa" section for the required documents.) You must get your passport stamped in order to document your first entry into Ireland. Not getting your passport stamped could cause problems with your visa! You may not automatically receive a stamp, so you may have to ASK to have your passport stamped.

## 02 Baggage Claim

After Passport Control and Customs, follow signs to baggage claim. Delayed baggage must be reported to your airline's lost luggage counter before exiting the baggage claim area. After claiming your bags, exit into the airport lobby and look for a Maynooth University sign. The driver will transport you to campus, where you will complete housing check-in and receive an orientation schedule. A Maynooth University staff member OR one of their drivers will be waiting for you in the airport lobby. NOTE: They cannot meet you in baggage claim!

### HELPFUL TIPS

Address for delivery of delayed luggage:

Your Name  
Maynooth University  
Room # & Hall  
Maynooth  
Co. Kildare  
Postcode

ASA will provide your specific address in your final pre-departure email.

### **If my flight is delayed, will you still pick me up at the airport?**

If you will not be arriving as scheduled, it is YOUR responsibility to notify the emergency contact person indicated on your Last-Minute Checklist. They will let you know if you will still be picked up at the airport. We will make every effort to pick you up.



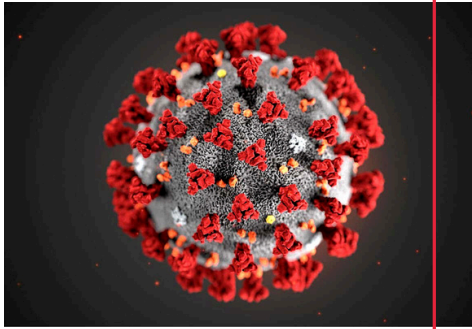
# Academics

Maynooth University  
Mariavilla, Maynooth, Co. Kildare,  
Ireland

## HELPFUL TIPS

Website:

[Maynooth University](https://www.maynoothuniversity.ie)



## COVID-19

Your host university may have COVID-19 protocols you must follow, such as sanitizing your desk after class, not congregating indoors, wearing a mask, sanitizing hands, and others. Please follow accordingly.



## Academic Terminology

Certain terms in the Irish academic system have a different meaning than in the USA.

"Course" = "Degree program, i.e. BA/BS"

"Module" = "Course/Class"



## Teaching Style

Many Irish professors utilize lecture with a limited amount of discussion. Irish professors may test students orally; ask students different questions on their exams; and, usually give fewer tests over the course of a term. You may be surprised to know that you may not have an idea of how you're doing in your classes, grades-wise, until you get your final grade! This is because some professors may not give quizzes or tests until the very end. Ask your professor if you are unsure.

Please note: Calendar is subject to change.

All Orientation meetings are mandatory.

At the following [link](#), you can see the Academic Calendar for your program.

**Academic Studies Abroad 9**

## Maynooth University

Maynooth University traces its origins back to 1795. Building on a tradition of scholarship and excellence in all aspects of its teaching and research, Maynooth University is committed to being a first class research-led center of learning and academic discovery, while still retaining a uniquely friendly and personal atmosphere.

Maynooth University is the fastest growing university in Ireland, with over 8,400 students from over 50 countries in Europe, North America, Asia, Latin America and the Middle East. Maynooth is located 15 miles or 25km west of Dublin (20 minutes by train) and is Ireland's only university town, which combines the historical legacy of its medieval origins with a present-day location on the fringes of Dublin, Ireland's capital. Students enjoy the safety, charm and peace of the local area, with easy and frequent access to Dublin city center.

## The Campus

The students union is an organization run by students, for students and is the center of campus life. You are strongly encouraged to join! It's also a great resource for academic support, counseling and other resources. The students union has full time officers who are elected by their fellow students every year. The students union is home to over 100 active student clubs and societies. Joining a club or society is the best way to meet new people and make Irish friends!

A new university restaurant recently opened on the North Campus with seating for 650 and the new library extension will double the size of the existing building.

Maynooth University has North and South Campuses, separated by Kilcock Road. North Campus is home to Student Residences, the majority of academic departments, and popular spots for students, such as the Sports Complex, Student Centre, Student Services, and Student Restaurant. South Campus is home to the majority of university administration offices, as well as the Library, Computer Centre, International Office, and some academic departments.

## The Town of Maynooth

Maynooth town traces its historical significance back to the 12th century when the Fitzgerald family established a stronghold, in the form of a castle which can still be seen at the gates of the University. The local area surrounding Maynooth is rich with historical significance, through Carton House and Demesne, Castletown House and Leixlip Castle, home to the Guinness family. There are several historical monuments dating from the time of the Great Famine of Ireland in the local area.

Today, Maynooth is a charming and busy town with many shops, cafes, public transport options and general services, and home to a vibrant local community that offers students abundant opportunities to enjoy an active social life.

Maynooth's location is also adjacent to the Irish 'silicon valley', home to the European and International headquarters of many multi-national companies, such as Intel, HP, Facebook, Microsoft and Google. The university has strong connections with several multinational companies, providing opportunities for guest speakers, seminars, and work placements for Maynooth University students.

## Orientation & Registration

Orientation week takes place the week before lectures commence and provides vital information, as well as various activities designed to not only acclimate to your new university environment, but interact with other students. ASA will have its own orientation activities/meetings, and you will also have a number of activities run by the university.

Orientation is a weeklong event that welcomes all students to the University and includes welcome talks, campus tours and introductions to the academic departments, student services, and clubs and societies. It is compulsory that all students attend orientation. Failure to attend will likely have a serious negative effect not only in your studies, but on your overall student experience.

Registration is the process by which you officially become an enrolled student. All International students must complete Registration; it usually happens within your first few days on campus. During orientation week you'll find out exactly when and where to register.

At Registration you will be issued your student card. This is an important document! It proves that you are registered at the University and permits you to enter University buildings and borrow books from the University library. An orange sheet will also be given to you that details your student number and your username and password, which are required to access the University computer network. *Students are advised to memorize the student number, as it is used as a student reference all around the University.* Your student number, username and password are also necessary to access on-campus computers and University web services such as webmail, Moodle, and exam results.

You will be assigned a day and time to register.

## Grading & Attendance Policy

Students will be graded based on their performance in class and their ability to complete all the required coursework on time. If a student has to miss large portions of class, due to illness or other problems, they may receive an incomplete grade for the course.

Regular attendance of classes is expected of every student, and students are responsible for all work missed during an absence. In fact, all non-EU students are required to attend a minimum of 85% of classes by Irish law, to satisfy the conditions of their study visas.

You are also expected to arrive on time for all classes. If you are late for a class and your attendance is not recorded, it will count as an unexcused absence and will affect your overall attendance record.

If you have a valid reason for non-attendance, you are required to provide an explanation along with any relevant documentation to your professor and a copy to the International Office. If your non-attendance is for medical reasons, you must submit a Medical Certificate from the Medical Centre. Certified or documented absences will not affect your attendance record. If you are unable to attend a class for cultural or religious reasons (i.e. religious holiday), please contact your professor ahead of time.

Poor attendance will result in the university sending a formal written warning, and persistent unsatisfactory attendance may lead to expulsion and being reported to the Irish Naturalisation Immigration Service (INIS).

# Academics

## Grading

You must check with your home institution to ensure you understand:

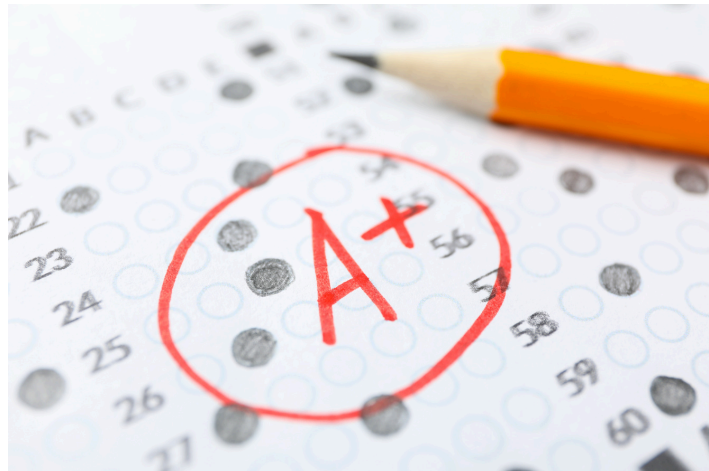
- The minimum grade you need to earn to receive transfer credit. Typically you need to earn a C or C+, but this can vary by institution. *Check with your home institution to ensure you understand their requirements!*
- Will your grades impact your GPA? Every institution handles this differently! Some institutions transfer in study abroad grades and it impacts your gpa. Some transfer in the grades and it doesn't impact your gpa. Others transfer in study abroad grades as pass/fail. Be sure you understand how your institution handles this.

You must check with your host institution or ASA Site Director upon arrival to ensure you understand:

- The deadline to change or drop classes. Classes dropped after your host institution's add/drop deadline will appear on your final transcript with a failing grade.
- What is your host institution's attendance policy? Absences from class will affect your grade and can result in a failing grade. Many institutions only allow a couple of absences a semester and only for valid reasons such as medical. Travel or family/friend visit is NOT ever an excused absence.

Maynooth University Grade	86-100	70-85	66-69	63-65	60-62	56-59	53-55	50-52	46-49	43-45	40-42	39-0
US Grade	A	A-	B+	B	B-	C+	C	C-	D+	D	D-	F

\*These are suggested grade equivalencies provided by the host institution and are SUBJECT TO CHANGE. Your home institution may use a different set of equivalencies. Your HOME INSTITUTION will ultimately determine your final grade and credit equivalencies.



# Everyday Life

## Tipping

In general, tipping is expected. A 10-15% service charge is usually added to your bill. Additional tipping for exceptional service is your choice. Usually a 10% tip will suffice for acceptable service at restaurant where gratuity has not already been added to the bill. Tipping is not usual in pubs, except when you are served at your table. Taxi drivers are generally tipped around 10% (at the very least, round up the fare).

## Smoking

In Ireland, smoking is not permitted in all enclosed workplaces, including pubs. Please be respectful of local social norms when it comes to smoking.

## Water

It is safe to drink the water, but you will find that in most European countries, it is more common for people to use bottled mineral or still water to drink rather than tap water.

## Language

There are two official languages in Ireland:

- English, which is the language of the majority of the population
- Irish (Gaelic or Gaeilge), which is the national language.

Many public toilets in pubs and restaurants are marked in Irish: “Fír” = men and “Mná” = women.

Irish is a Celtic language, the oldest vernacular written language in Western Europe, closely related to Scottish Gaelic, Welsh, and Breton. It was the language of the vast majority of the population until the early 19th century. The shift to English happened quickly and by 1891 it was being spoken by over 85% of the population. Today, Irish is only widely spoken in the Gaeltacht (Irish-speaking) areas, such as in towns like Galway. It is not widely spoken in Dublin anymore, though many Irish people are now interested in their heritage and have begun to learn Gaelic again. Keep in mind, accents differ from one county to another, and even from one area of Dublin to the next. Don't be afraid to ask people to repeat themselves if you can't understand them!

### HELPFUL TIPS

19 words that have a totally different meaning in Ireland!

# Everyday Life

## Housing

ASA will email you your housing assignment approximately 1-2 weeks before your program start date.

ASA students live in furnished apartments on Maynooth University campus.

Housing is provided for the duration of the program, but not before or after program dates.

All of the university's student residences are on North Campus: Village Apartments, River Apartments, and Rye Hall. Rooms on campus are allocated according to availability. Neither ASA nor Maynooth University can guarantee placement in any particular hall or flat.

## Meals & Dining

A new state-of-the-art canteen, called 'The Phoenix' opened in 2011. It is located beside the Student Union and has a seating capacity for approximately 500 people over two floors and includes a large, paved plaza between the sports hall and the common room.

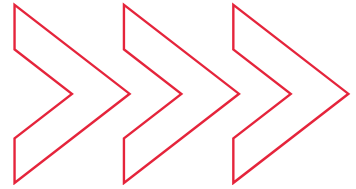
The Student Common Room, located behind the Arts block, caters for students to eat their own lunches, have group meetings, watch the news on the plasma screens or use their laptops. It is a space designed solely for students to have their own place to relax.

Food is also served at @Your Clubhouse and Chill Cafe in the Student Union, and O'Brien's in the John Hume building. There is also a Londis shop located in the John Hume Building, where you can buy some groceries, snack foods and convenience items.

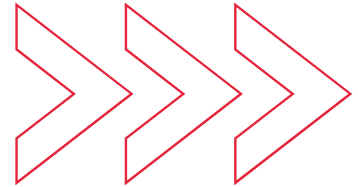
At this [link](#), you can find more information about on-campus dining options!

Maynooth town also has several restaurants and pubs that are just a few minutes' walk from campus!

**Daily Breakfast and lunch is included in your program fees.** Grocery and other stores where you can stock up on food and other necessities are located a 5-minute walk from campus. Manor Mills is a shopping center located just off the main street and has a Dunnes Stores (large grocery & department store), butcher, hairdresser, chemist (pharmacy), bookstore, optician, dry cleaners, sporting goods, and more.



# Everyday Life



## Weather

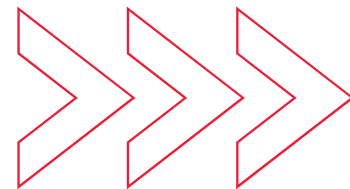
It can be rainy and chilly in the Dublin region during the summer and quite cold in the winter. For all seasons, make sure to always bring a good waterproof jacket, comfortable waterproof shoes/boots, and clothing you can layer. In winter, you'll need a very warm and durable winter coat, a hat, scarf and gloves, in addition to the aforementioned items.

Average temperatures are as follows:

Months	Temperature
Jan - Feb	45° F
March - April	51° F
May - June	61° F
July - Aug	66° F
Sept - Oct	59° F
Nov - Dec	46° F



# Everyday Life



## Local Transportation

Getting around the Dublin region is easy and inexpensive using the Dublin Bus, Luas, DART (Dublin Area Rapid Transport), hired car or taxi. The city is also easily traversed by bicycle for those who enjoy a more energetic approach to transport.

### Dublin Bus

Bus services in Dublin city and county are provided by Dublin Bus. They operate from approx. 7:00 a.m. to 11:30 p.m. Mon-Sat with a more limited service on Sundays. There is also a late night bus service called NiteLink that runs from 12:30am-2am, Mon-Wed, and 12:30am-4:30am, Thurs-Sat. A NiteLink ticket costs €4 or €6 depending on the distance. NiteLink is the better, noisier and cheaper option for getting home late, especially on weekends, as taxis do not always meet the demands of the weekend partygoers! Timetables for buses including details of various money-saving commuter and tourist tickets are sold in retail shops and other stores throughout the Dublin region. Sundays and bank holidays have restricted bus services throughout the day, starting at the later time of 9:30am-11:30pm.

The Dublin Bus Information Office is located at 59 Upper O'Connell Street and there is also a Dublin Bus desk in the Dublin Tourism Centre, Suffolk Street, Dublin 2. Tel: +353 1 8734222 Timetables can be found at: <http://www.dublinbus.ie>

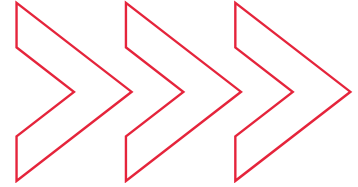
You can get bus timetable information on your mobile phone by texting BUS followed by the bus route number (i.e. BUS 10) to 53503 and then pressing send. You will receive a response containing times for the next 3 buses in each direction. The charge for this service is approx. 30c. You can pre-plan a journey, i.e. BUS 10 1800, for the times of the 10 route from 6pm onwards. Plan tomorrow's journey, i.e. BUS 10 0930 TOMORROW, for the times of the 10 route from 9:30am onwards tomorrow.

Bus fares range from €1.00 to €2.10 and are based on how far you have to travel. The average bus fare is between €1.30 and €1.50 and is valid for one way (not round trip journey). The price of a NiteLink ticket is €4. This is cheaper than a taxi.

Please note that Dublin Bus operates on an Autofare System. This means that you must give the exact fare to the driver. If you give more than the actual fare, the driver does not give change, but instead issues a passenger refund ticket. This ticket can only be exchanged for the money owed, at the Dublin Bus office on O'Connell Street.



# Everyday Life



## Local Transportation continued:

### Aircoach

Aircoach is a private operator that runs its distinctive blue air-conditioned luxury coaches between Dublin Airport and the center and south of the city, servicing many of the hotels and B&Bs. The service runs 24 hours a day. Tel: +353 1 8447118 ; [aircoach@iol.ie](mailto:aircoach@iol.ie)

### LUAS

The Luas is a tram service that operates from St. Stephen's Green to Sandyford (Green Line) and from Connolly Station to Tallaght (Red Line). Luas is the newest form of public transport in Dublin city. The average price for a journey on the Luas is €1.30. Over the coming years, another 6 Luas lines will be added to the 2 lines currently in operation.

### DART (Dublin Area Rapid Transport)

The DART suburban rail service operates along the coast between Howth in the North of Dublin to Bray in the South. The times of the DARTs vary between every 5 minutes during rush hour, to every half hour on Sundays. The main DART stations servicing Dublin city centre are Pearse Street Station, Tara Street Station and Connolly Station. For more information on the various destinations and the variety of travel ticket options available, contact the DART office at Tel: +353 1 7033504

### Taxis

Taxis can be hailed in Dublin on the street, at hotels, outside rail or bus stations or at taxi ranks, which are clearly marked. Taxis are run by meters, so always ensure that the meter is turned on before your journey starts. For safety, always ensure that any taxi you get into has the driver's taxi license, including their photo, clearly displayed in the vehicle. Taxis are generally expensive and can be difficult to get, especially on weekend nights just after the pubs and nightclubs close. Three of the main taxi ranks in the city center are located on O'Connell Street, Dame Street and St. Stephen's Green. Local taxi firms: Cabline: Tel: 01 454 1541; SCR Cabs: Tel: 01 473 1166; Dolphin Cabs: Tel :01 454 1875

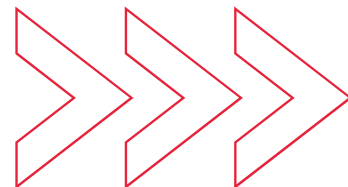
### Iarnród Éireann- Irish Rail

Trains serving all parts of Ireland are run by the state rail company Iarnród Éireann/Irish Rail. There are two train stations in Dublin city: Dublin- Connolly Station and Heuston Station. Trains going to the South or West of Ireland depart from Heuston, which is a short distance from the city center by bus or taxi. Trains going to the North and Northeast of Ireland depart from Connolly Station, which is in the city center. Train fares tend to be expensive. Tel: 836 6222

### Bus Éireann- Irish Bus

Bus Éireann is the Republic's national bus line and operates bus services from Dublin to the rest of Ireland. Their fares are significantly cheaper than regular train fares, but the journey tends to take longer. The bus depot is in Busáras on the North side of the city, on Amiens Street near Connolly Station. You can get student discounts if you have a USIT card. Tel: 836 6111

# Staying In Touch



## Cell Phones

For information about cell phones abroad, please see the  
ASA PRE-DEPARTURE GUIDE FOR ALL PROGRAMS

## Time Difference

The following are the number of hours BEHIND Ireland each region is:

Pacific	Mountain	Central	Eastern
8 hours	7 hours	6 hours	5 hours

For date and time around the world, to help schedule meetings, sunrise and sunset, use the [Time and Date](#) website.

## Computers & Internet

***Should I bring a laptop?*** Yes. Wi-Fi networks are widely available across the campus. Outdoor Wi-Fi is now available in the green spaces between Hume building and the Arts Block. Signal strength is strong and can support hundreds of users.

## Helpful Info

The following are the public holidays in the Republic of Ireland.

Most companies and shops are closed on these days:

January 1: New Year's Day

March 17: St. Patrick's Day

Friday before Easter: Good Friday

Monday after Easter: Easter Monday

First Monday in May: May Day Holiday

First Monday in June: June Holiday

First Monday in August: August Holiday

Last Monday in October: October Holiday

December 25: Christmas Holiday

December 26: St. Stephen's Day